

Wisconsin Women's Council

New Board Member
Orientation

last updated 10/17

Welcome!

Stop by the office
and visit anytime!

Office location:

Dept. of Administration Bldg.
101 East Wilson, 9th fl
Madison, WI 53703

Office Hours: 8am to 4:30 pm

Christine Lidbury

Executive Director

608-266-2219 (office)

608-334-0109 (cell)

christine.lidbury@wi.gov

Mary Jo Baas

Chair

*Board member contact information
is distributed at Board meetings or
it can be provided upon request.*

Feel free to contact the Director and/or the Chair if you have questions, concerns, suggestions, etc., about Council programs, operations or the Board.

Welcome!



The meeting schedule and location are set by the Board. Currently the Board meets quarterly at the State Capitol in Madison.

2017 Meetings – 1st Wednesday

March 1

June 7

September 6

December 6

Meetings are held from 11:30 am to 1:30 pm at the State Capitol. Lunch is provided.

A list of Upcoming Meetings can always be found on the website under the link “About” then “Meetings”. [Click here](#)

History

How the Women's Council came to be ...

Wisconsin's Governor's Commission on the Status of Women (1964-1979)

- Following President Kennedy's Commission on the Status of Women, Governor John Reynolds was approached by a group of Wisconsin women to create a state commission.
- In 1964, the 34-member citizens commission – Wisconsin Commission on the Status of Women (WCSW) – was charged with investigating the conditions and quality of life of Wisconsin women and to work toward substantive changes to improve their status and ability to participate in society.
- Kay Clarenbach chaired the commission through its existence; Norma Briggs served as Executive Director.
- WCSW's first report, *Wisconsin Women* (1965), included recommendations on education, family, employment, citizen participation and legal rights. WCSW also issued publications on women and the law, marital property, credit, careers and a directory of women's organizations and resources.
- In 1979, Governor Dreyfus abolished the commission.

Kathryn (Kay) Clarenbach

“Kay Clarenbach has succeeded in becoming one of the country’s top feminists without losing her femininity.” Milwaukee Sentinel, Feb 6, 1969.

In the early 1960s, Kay Clarenbach (UW-Extension and UW-Madison) had the idea for a statewide Governor's Commission on the Status of Women. At Governor Reynolds' (1963-1965) request, Kay chaired the planning conference and later served as the Chair throughout the Commission's life.



In 1966, Kay became one of the founders of the National Organization for Women (NOW) – participating in the first meeting which was held in Betty Friedan's hotel room – and was elected as NOW's first Board Chair.

While leading the charge for the creation of the Wisconsin Women's Council, she also founded the National Women's Political Caucus and the Wisconsin Women's Network.



The Wisconsin Women's Council was established by Gov. Tony Earl through Executive Order 5, issued February 1, 1983 and established in statute in 1983 Wisconsin Act 27.

Leadership

You are part of a long and illustrious history of women and men from across Wisconsin to serve on the Women's Council!

The Women's Council has operated under five Governors:

Gov. Tony Earl

Gov. Tommy Thompson

Gov. Scott McCallum

Gov. Jim Doyle

Gov. Scott Walker

and five Board Chairs:

Sarah Harder (1985-1988)

Susan Vergeront (1989-1990)

Margaret Farrow (1991-2000)

Mary Jo Baas (2001-2004)

Kristine Martinsek (2004-2011)

Mary Jo Baas (2011-present)

An historical list of Women's Council Board Members from 1983 to the present is available on the website under the links "About" then "History". [Click here.](#) 8



Mission and Board

Statutory provisions and policy that govern the Council

Statutory Mission

Wisconsin Statutes
§ 16.01



In replacing a Governor's Commission, the new Women's Council was designed to be statutory and to involve the Governor and the Legislature.

To enhance the ability of all Wisconsin women to participate fully and equally in all aspects of life.

Work closely with public, private and not-for-profit groups to carry out this mission.

The Women's Council Shall ...

Provisions in the Women's Council's Authorizing Statute

Identify the barriers that prevent women in this state from participating fully and equally in all aspects of life

Work closely with all state agencies, including with the UW and technical college systems, private sector, and groups concerned with women's issues to **develop long-term solutions** to women's economic and social inequality.

Disseminate information on the status of women in this state.

Conduct statewide hearings on issues of concern to women.

Review, monitor and advise all state agencies regarding the impact upon women of current and emerging state policies, procedures, practices, laws and administrative rules

Recommend changes to the public and private sectors and **initiate legislation** to further women's economic and social equality and improve this state's tax base and economy.

Agency Operations

Staff

Executive Director

Christine Lidbury
since 2004

One full-time staff person
Career Civil Service Position
Hired under a competitive
employment process

Christine's Resume Highlights:

'90-'94 Executive Office of the President
(Washington, DC)
'94-'99 OECD (Paris, France)
'99-'02 NYC Independent Budget Office
'02-'04 Rock County, Wisconsin

Agency Operations

Funding

As a state government agency, the Council is funded through General Purpose Revenues (GPR) in the Governor's Biennial Budget.

Supplemental funds are sought on occasion for specific projects and events.

Examples of outside funding:

BMO Harris Bank (Trailblazer Awards)

Women's Bureau, USDOL (Green Jobs Roundtable & "Fraud Busters" Financial Literacy Speaker Program)

WWBIC (Women's Business Roundtables)

Harley Davidson, Rockwell Automation, RW Baird, Alliant Energy (Girls & STEM)

Board Appointments

Wisconsin Statutes
§ 15.107



Governor

Governor's Designee

Chair

5 Public Members

Senate President & Majority Leader

2 Senate Members (by President)

2 Public Members (by Maj. Leader)

Assembly Speaker

2 Assembly Members

2 Public Members

Members serve 2-year staggered terms, except Designee (4-yr term). Members may continue to serve beyond the term of their appointment until their position is reappointed or they resign.



Governor

Mary Jo Baas, Chair*
vacant, Gov. Designee*

Brianna Buch

Patty Cadorin*

Karen Katz*

Jessie Nicholson

Katie Mnuk*



**Executive Committee*



Assembly Speaker

Representative [vacant]

Representative [vacant]

Carrie Richards

Kim Nickel



Coming
soon!



Senate Majority Leader & President

Senator [vacant]

Senator Janis Ringhand

Shelby Lemke

Cindy Block

Board Membership

Agency policy
governing Board
Membership

Active participation on the Council is required of all members.

A quorum for conducting official business is eight (8) members.

In the absence of a quorum, advisory votes may be solicited. Staff or others attending on behalf of a member do not count toward a quorum.

Members who cannot be physically present at a meeting may participate and vote by telephone/conference call.

Board Membership

Agency policy
governing Board
Membership

No Council member may speak for the Council unless presenting a position officially adopted by the body.

When not officially representing the Council, members may mention their affiliation but must note that any views or comments are individual and not official.

Council letterhead and/or logo may only be used by members for communications related to positions officially adopted by the body. Clear with Chair.

Board Membership

Rules & Regulations
for State Appointed
Board Members



As a Board Member you are a STATE PUBLIC OFFICIAL. Specific rules apply to your conduct. Please review the Official Guidelines linked below.

[GAB 1201](#) [click for links]
Standards of Conduct

[GAB 1216](#)
Receipt of Food, Drink, etc.

[GAB 1232](#)
Conflicts of Interest

For any questions, contact:
Wisconsin Ethic Commissions
website: ethics.wi.gov
608-266-8132



Board Members are required to submit an Oath of Office Form that is signed and notarized. If you have not submitted such a form or aren't sure, contact Christine.

Board Membership

Role of the Chair & Vice Chair

The Chair is appointed by the Governor, the Vice Chair is elected by the Council.

The Vice-Chair fills in for the Chair, as needed, to run meetings and represent the Council.

The Chair serves as an ex-officio member of all committees.

Assist in the development of agendas for Council meetings – see “Council Meetings” page.

Assist the Executive Director and other Members with Council agenda and goal-setting.

Provide assistance to the Executive Director as needed.

Council Meetings

The Chair sets the agenda in consultation with the Executive Director.

Members are invited to propose agenda items. Items should be submitted by email to the Exec. Director at least two (2) weeks prior to the meeting date.

Women's Council meetings are Public Meetings subject to the Open Meetings Act.

Council Meetings

Open Meetings Law

The open meetings law requires that “all meetings of all state and local governmental bodies shall be publicly held in places reasonably accessible to members of the public and shall be open to all citizens at all times unless otherwise expressly provided by law.” Wis. Stat. § 19.81(2). There is a presumption that meetings of governmental bodies must be held in open session.



- (1) give advance public notice of each of meeting, and
- (2) conduct all business in open session (some specific exemptions allow for closed session).

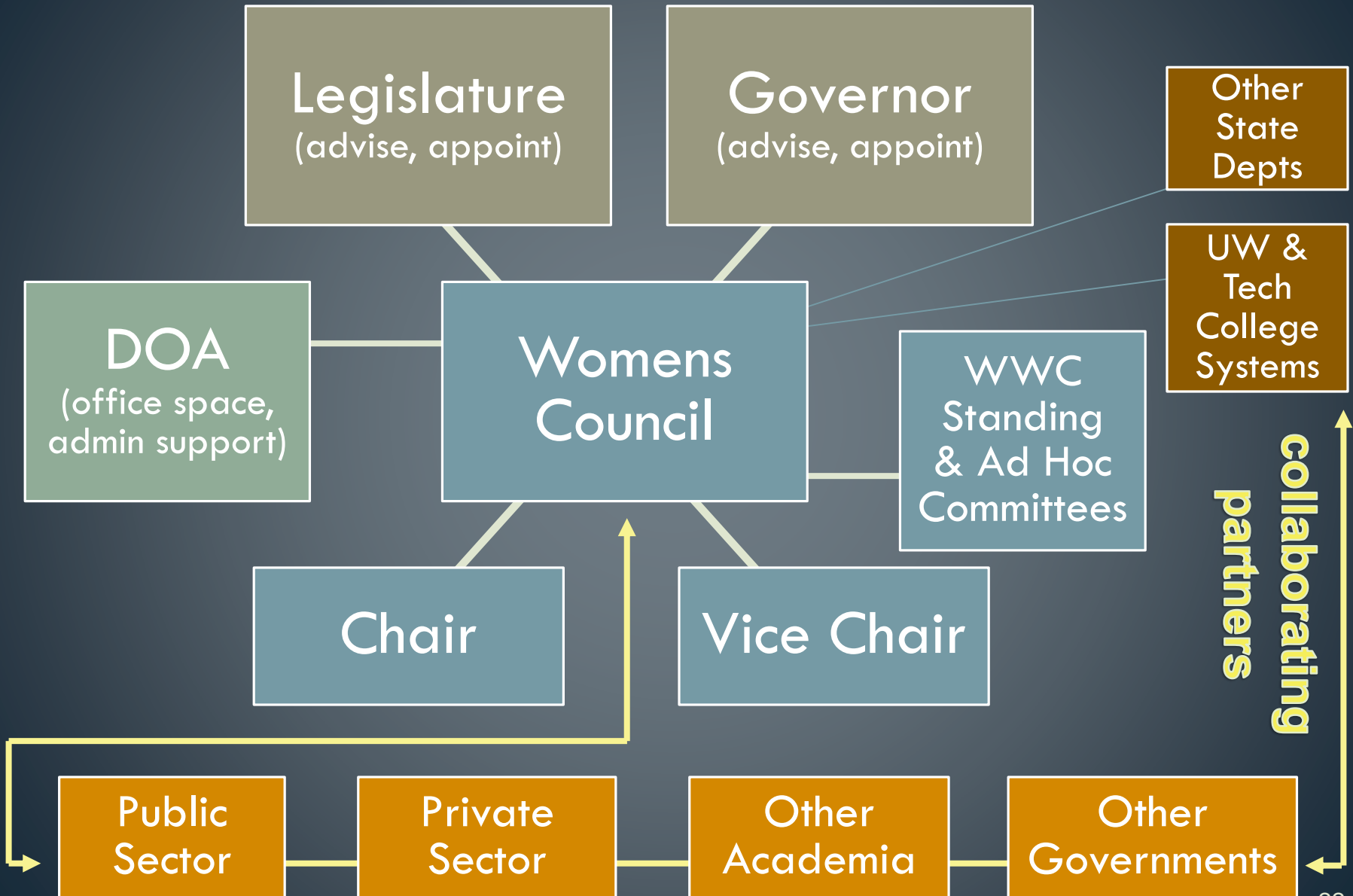


Violation: “Walking Quorum” - a series of gatherings among smaller groups of Board Members, who agree, tacitly or explicitly, to act uniformly in numbers to reach a quorum.



Violation: Out-of-meeting communications among a quorum of Board Members, such as by mail or telephone, outside of a publicly noticed meeting. Don't “REPLY ALL!”

Women's Council Partners Flow Chart





Program

The Council's agenda and priority work areas

Current Priority Issue Areas

Women & Adult Family
Caregiving

Women's Business Ownership

Governor's Trailblazer Awards

Status of Women Research

Maintain Visibility & Partnerships

For information on past programs
and activities, see the Council's
Biennial Reports, which are provided
on the web site under the links
"About" and then "Biennial Reports".

[Click here](#)

Web site & Social Media

www.womenscouncil.wi.gov

online email list sign-up
1 500 subscribers, plus Legislature

[Facebook Page](#) (“LIKE” us!)

[Click here](#)

Board Members are listed on the web site under the link “ABOUT”. Listing for each member includes a photo, bio and term on the Council.

[Click here](#)

Board Members are welcome to suggest content for the web site and social media. Concerns about content should be sent to the Executive Director or Chair.

Historical List of Priority Work Areas

(2007-2016)

1. Economic Self-Sufficiency

- Annual wage gap/econ reports
- Displaced homemakers grant review
- Girls & STEM/LEAP Conferences
- Green Jobs Roundtable (WB)
- WI DCF Poverty Summit
- Women & Poverty Report

2. Women's business ownership

- Governor's Trailblazer Awards
- WBE Fact Sheets & Forums
- WBE Roundtables w/ Lt. Governor
- WBE Conferences/Events (sponsor)

3. Safety from Violence

- Conferences & events (sponsor)
- Lobbied on related legislation

4. Women's mental health issues & stigma reduction

- Lt. Governor's Task Force
- Services for Vets Webinar (WB/DVA)

5. Access to Afford. Quality Child Care

- Advocated YoungStar program
- Strongest Links Conferences w/ DCF

6. Financial Literacy

- Online Checklist *in progress
- Financial Tips Brochure
- Fraud Awareness Programs
- Online Resource Directory

7. Women in Elected Office

- Benchmarking Reports

8. Anti-Human Trafficking

- Community Dialogues around Wisconsin, (DOJ CVC)

DCF – WI Dept. of Children & Families

DOJ CVC – WI Dept. of Justice, Crime Victims Council

DVA – WI Dept. of Veterans Affairs

LEAP – Learn, Earn And Prosper

MATC – Madison Area Technical College

WB – Women's Bureau, US Dept. of Labor

WBE - Women's Business Enterprise

QUESTIONS? If you have questions or would like me to review these materials with you, please contact me at 608-266-2219 or christine.lidbury@wi.gov.