

**Minutes of the Meeting of the  
Wisconsin Women's Council – March 2, 2022**

**Virtual Meeting via Zoom**

Present: Ze Yang (Acting Chair), Dr. Jolene Bowman, Rachel Fernandez, Denise Gaumer Hutchison, Dr. Rosalyn McFarland, Nerissa Nelson, Representative Emerson, Senator Ringhand, Carrie Richard, Amanda Roddy. A quorum was present.

Also Attending: Christine Lidbury (Executive Director), Caitlynn Klostermann (Intern).

1. Welcome by Chair
2. Approval of Minutes of September 2021 and December 2021. Motion to approve Denise Gaumer Hutchison. Second Nerissa Nelson. Approved.
3. Subcommittee Updates

Women. Wellness, Traditional Art & Culture

a. Hmong Women

Partnership with the Hmong Institute in Madison.

Mai Zong Vue, who spoke at the September board meeting, is serving as a consultant and assisting in program development and will recruit participants for a proposed Story Quilt Project that will focus on strengths, struggles and resiliency during COVID.

Hmong Institute Women's Group sessions for this project will start in April.

b. Wrap the Capitol for Missing and Murdered Indigenous Women Day of Awareness.

Rachel Fernandez is organizing the program and outreach. The final flyer will be available shortly and will be distributed to the Board. Woodland Women Rachel will host a Ribbon Skirt making event in April the Menominee Language and Cultural Center and will reach out to other tribal communities to participate with remote participation available. Women's Council is providing sponsorship funds to cover the cost of materials.

2. Untold Stories of Wisconsin Women

Stories were collected through February.

6 stories from 4 WWC Board Members

Patty/2, Jolene/2, Ze/1, Nerissa/1

Milwaukee/3, Stockbridge-Munsee Shawano/2, Stevens Point/1

Racial/ethnic diversity:

Hispanic/1

African American/1

Asian\_Hmong/1

Asian\_Pakistani/1

Native American\_Stockbridge/2

Christine gave a summary of each nomination I (see board presentation attached).

Motion was made to continue to collect nominations from the Board and still look to start publication in March for Women's History Month as follows:

- Continue to collect nominations from Board Members.
- Release two stories every month.
- Website page, including resources.
- Media Outreach, including Social Media
- Explore Printing and Distribution Resources

Moved by Nerissa Nelson; second by Amanda Roddy. Approved.

Denise requested an opportunity to review the posters and text before they are considered final and sent to the graphic designer. The opportunity to review will be offered to all Board members.

Denise will talk to the League of Women Voters and YWCA about co-sponsoring and/or distribution.

### Upcoming Events

US DOL Women's Bureau is hosting a Regional Women's Commission Meeting., Board member are welcome to attend. Christine will distribute registration information.

Christine introduced the Council's Spring intern, Caitlyn Klostermann, to talk about her projects.



## FOND DU LAC AREA WOMEN'S FUND: STATUS OF WOMEN IN NE WI

- Previous reports released 2011 and 2017, interested in releasing new report using data from 2020
- Summarizing the status of women in 12 different social, health, and political indicator including:
  - Education attainment
  - Work wages
  - Political representation

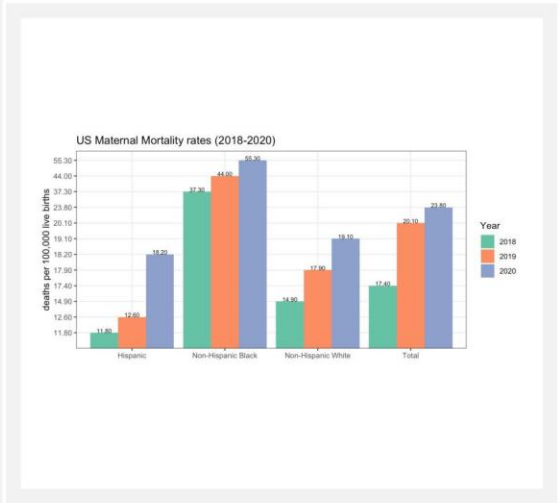
<https://www.fdlwomensfund.com/status-of-women-ne-wi-2017/>

### What I'm doing:

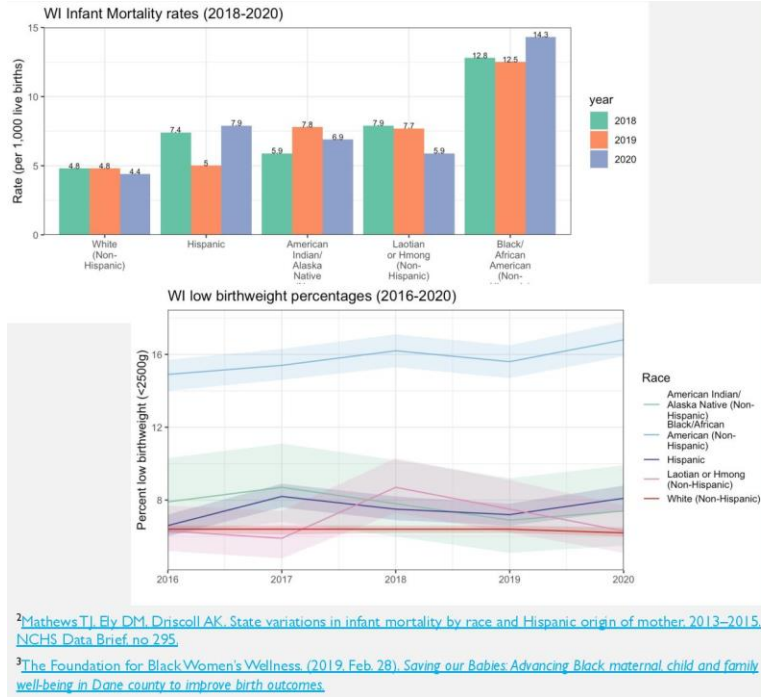
- Compiling national and state data resources for each indicator to be used in analysis for future reports
- Evaluating the quality of data
  - How did COVID-19 effect 2020 data collection?
  - Is there bias displaying higher distributions of certain populations?
  - Did COVID-19 prohibit data collection altogether for some indicators?

## WWC MATERNAL AND INFANT HEALTH FACTSHEET UPDATE

- Using most recent data (2020) to create public education materials about maternal health inequities
- CDC recent release of 2020 maternal mortality data shows rate is rising!
  - Why?
    - COVID-19
    - Healthcare coverage
  - Who is most affected?
  - Is there variation from national trend in WI?



<sup>1</sup>[Hoyert DL. Maternal mortality rates in the United States, 2020. NCHS Health E-Stats. 2022.](#)



**WWC MATERNAL AND INFANT HEALTH FACTSHEET UPDATE**

- Historically, WI has had the highest Black infant mortality rate in the country.<sup>2</sup>
- Babies born to Black mothers are 3x more likely to die and 2x more likely to be born at a low birthweight than babies born to white mothers.<sup>3</sup>
- Upon initial analysis using 2020 data from the WI Department of Health Services (DHS), I'm finding that these statistics remain unresolved.

**Board and Staff Update**

Christine announced she will be taking early retirement in Summer 2022 and is coordinating with DOA Department of Personnel Management on the future recruitment and timing to ensure a smooth transition.

Christine also spoke about the Chair vacancy. The Chair is appointed by the Governor's Office. She asked if any current members would be interested in the Chair appointment and offered to forward names to the Governor's Appointments office. Dr. Rosalyn McFarland and Denise Gaumer Hutchison expressed possible interest.

There were no public comments.

Motion to adjourn by Denise Gaumer Hutchison; second Amanda Roddy. Approved.

Respectfully submitted,

Christine Lidbury  
 Executive Director